



HAL
open science

Amelotin: an enamel matrix protein that experienced distinct evolutionary histories in amphibians, sauropsids and mammals

Barbara Gasse, Ylenia Chiari, Jérémie Silvent, Tiphaine Davit-Béal,
Jean-Yves Sire

► To cite this version:

Barbara Gasse, Ylenia Chiari, Jérémie Silvent, Tiphaine Davit-Béal, Jean-Yves Sire. Amelotin: an enamel matrix protein that experienced distinct evolutionary histories in amphibians, sauropsids and mammals. *BMC Evolutionary Biology*, 2015, 15, pp.47. 10.1186/s12862-015-0329-x . hal-01212821

HAL Id: hal-01212821

<https://hal.sorbonne-universite.fr/hal-01212821>

Submitted on 7 Oct 2015

HAL is a multi-disciplinary open access archive for the deposit and dissemination of scientific research documents, whether they are published or not. The documents may come from teaching and research institutions in France or abroad, or from public or private research centers.

L'archive ouverte pluridisciplinaire **HAL**, est destinée au dépôt et à la diffusion de documents scientifiques de niveau recherche, publiés ou non, émanant des établissements d'enseignement et de recherche français ou étrangers, des laboratoires publics ou privés.



Distributed under a Creative Commons Attribution 4.0 International License

RESEARCH ARTICLE

Open Access

Amelotin: an enamel matrix protein that experienced distinct evolutionary histories in amphibians, sauropsids and mammals

Barbara Gasse¹, Ylenia Chiari², Jérémie Silvent^{1,3}, Tiphaine Davit-Béal¹ and Jean-Yves Sire^{1*}

Abstract

Background: Amelotin (AMTN) is an ameloblast-secreted protein that belongs to the secretory calcium-binding phosphoprotein (SCPP) family, which originated in early vertebrates. In rodents, AMTN is expressed during the maturation stage of amelogenesis only. This expression pattern strongly differs from the spatiotemporal expression of other ameloblast-secreted SCPPs, such as the enamel matrix proteins (EMPs). Furthermore, *AMTN* was characterized in rodents only. In this study, we applied various approaches, including *in silico* screening of databases, PCRs and transcriptome sequencing to characterize *AMTN* sequences in sauropsids and amphibians, and compared them to available mammalian and coelacanth sequences.

Results: We showed that (i) AMTN is tooth (enamel) specific and underwent pseudogenization in toothless turtles and birds, and (ii) the *AMTN* structure changed during tetrapod evolution. To infer AMTN function, we studied spatiotemporal expression of *AMTN* during amelogenesis in a salamander and a lizard, and compared the results with available expression data from mouse. We found that *AMTN* is expressed throughout amelogenesis in non-mammalian tetrapods, in contrast to its expression limited to enamel maturation in rodents.

Conclusions: Taken together our findings suggest that AMTN was primarily an EMP. Its functions were conserved in amphibians and sauropsids while a change occurred early in the mammalian lineage, modifying its expression pattern during amelogenesis and its gene structure. These changes likely led to a partial loss of AMTN function and could have a link with the emergence of prismatic enamel in mammals.

Keywords: Enamel, Amelogenesis, Tetrapods, Bioinformatics, Gene expression, Evolution

Background

In tetrapods, the forming enamel matrix is mainly composed of three enamel matrix proteins (EMPs) secreted by ameloblasts: amelogenin (AMEL), ameloblastin (AMBN), and enamelin (ENAM). Three ameloblast-secreted proteins are further known: odontogenic ameloblast-associated (ODAM), amelotin (AMTN) and secretory calcium-binding phosphoprotein-proline-glutamine-rich 1 (SCPP-PQ1) [1-5]. These three proteins play a role during enamel maturation, but their precise function is still debated. Similar to EMPs, AMTN is a proline/glutamine (P/Q) rich protein that belongs to the secretory calcium-binding phosphoprotein (SCPP) family, which comprises proteins

involved in mineralization of bone and tooth (dentin and enamel) tissues. In mammals only, this family also includes saliva and milk proteins [6-8]. The SCPP family is originally related to the SPARC family that evolved through whole-genome duplications and gave rise to SPARC and SPARC-L1 in vertebrates [9-11]. Further duplications of SPARC-L1 gave rise to the first members of bone, dentin and enamel SCPPs. The SCPP family expanded rapidly through tandem duplications as illustrated by the presence of ten SCPP genes (including *AMTN*, *AMEL*, *ENAM* and *AMBN*) in the coelacanth genome [12]. *AMTN* and the three EMPs were, therefore, present in the ancestral sarcopterygian genome 450 million years ago (Mya) [13] and probably earlier. However, so far, even if a number of SCPPs were identified in the actinopterygian lineage (in teleost fishes), only two of them, SPP1 and

* Correspondence: jean-yves.sire@upmc.fr

¹Institut de Biologie Paris-Seine, Université Pierre et Marie Curie, Evolution Paris-Seine, Paris UMR7138, France

Full list of author information is available at the end of the article

ODAM, were recognized as having an ortholog in sarcopterygians [14].

In mammals, SCPP genes, with the exception of *AMEL*, are organized in two clusters (P/Q rich and acidic SCPPs) located on the same chromosome. In sauropsids (birds and reptiles), these clusters reside on two different chromosomes [15]. In all genomes explored so far, the *AMTN* gene is always located upstream *AMBN* and *ENAM* [11,16,17]. Because the EMPs derive from duplication events, *AMEL*, *AMBN* and *ENAM* are phylogenetically related [18]. The encoding EMP genes have been identified in the genome of many tetrapods, amphibians, sauropsids and mammals [15,19,20], and recently in the coelacanth genome [12]. Although *AMTN* is known in all mammalian lineages [17], so far it was found only in one lizard [14] and in one coelacanth [12] genome. *AMTN* is therefore poorly known in non-mammalian tetrapods.

In mammals, *AMTN* is composed of nine exons, which are all encoding the protein except for the first one. As for all SCPP genes, the signal peptide is encoded by exon 2. The mature protein is encoded by the 3' end of exon 2 and the following exons [1]. The translated protein is rich in proline, leucine, glutamine and threonine (52% of total by weight), and contains a conserved casein kinase 2 (CK2) phosphorylation site in the region encoded by exon 7 (SxxE/D, where x represents any amino acid) [3]. Two other transcripts were identified in rats. These splice variants lack either exon 7 or exons 3 to 7 [3].

A recent evolutionary analysis of *AMTN* in mammals has pointed to several amino acids unchanged for over 200 million years (Ma), indicating important functional sites [17]. Furthermore, *AMTN* is also essential for enamel biology as demonstrated by the presence of pseudogenes in enamel-less mammals e.g., sloth and armadillo [17]. However, in contrast to *AMEL*, *AMBN* and *ENAM*, in humans no *AMTN* mutation has been identified yet as being responsible for a genetic disease (*i.e.* amelogenesis imperfecta).

Studies in rodents have shown that *AMTN* is a secreted protein [1,3] that is post-translationally modified [3,21], probably by O-glycosylation [22]. In addition, *AMTN* interacts with itself and with ODAM, but not with *AMBN*, *ENAM* or *AMEL* [23]. *AMTN* is expressed by maturation-stage ameloblasts in mouse incisors [1]. The protein is specifically localized to a basal lamina-like layer, between the ameloblasts and the enamel mineral surface in rat and mouse incisors [3,21,24]. In contrast, Gao et al. [25] reports *AMTN* expression in the bulk enamel matrix of incisors and molars during early stages of mouse amelogenesis, although these results are thought to be artifactual [21].

The function of *AMTN* remains largely unknown and studies of its expression during amelogenesis in mice

and rats led to various hypotheses, e.g. as being involved either in enamel matrix proteolysis [1,25], or in adhesion of ameloblasts to the enamel surface [3], or in the establishment of the final prismless layer at the enamel surface [21]. *In vitro* studies revealed that recombinant *AMTN* did not mediate attachment of any cell types [21], refuting any role in ameloblast adhesion. Transgenic mice that overexpressed *AMTN* under *AMEL* promoter (*AMEL* is expressed early during amelogenesis) showed a disorganized enamel, a feature consistent with a role of *AMTN* in disrupting the regular arrangement of hydroxyapatite prisms [26]. Moreover, a recent study has shown that a recombinant human *AMTN* promotes hydroxyapatite precipitation and that the SSEEL motif in its phosphorylated form is necessary for the mineralizing property. The authors suggest that *AMTN* plays a role in the mineralization of the compact, nonprismatic, superficial enamel layer during maturation [27].

Despite its importance in enamel maturation in mammals, very little is known on *AMTN* evolution (origin, relationships and evolutionary histories) and function in tetrapods. To address this issue, we (i) identified *AMTN* sequences in two amphibians and eight sauropsids, (ii) compared the gene structure and the amino acid composition of the protein with those from mammals and coelacanth, (iii) compared the spatiotemporal expression of *AMTN* during amelogenesis in a lizard and a salamander with the expression pattern described in rodents, and (iv) analyzed the differences in the light of tetrapod evolution.

Methods

Amelotin sequences from publically available databases

AMTN sequences were obtained from databases (Ensembl [28] and NCBI [29]). See Additional file 1 for detailed information.

(i) Sequences of six representative mammalian lineages were used for comparison with non-mammalian *AMTN*: the published sequences from *Homo sapiens* (human, Primates) and *Mus musculus* (house mouse, Rodentia), and four sequences used in our previous study [17]: *Bos taurus* (cow, Laurasiatheria), *Loxodonta africana* (African elephant, Afrotheria), *Monodelphis domestica* (gray short-tail opossum, Marsupiala), and *Ornithorhynchus anatinus* (platypus, Monotremata).

(ii) Computer-predicted sequence of the lizard *Anolis carolinensis* (green anole, Squamata) was used as template to find *AMTN* with BLAST (Basic Local Alignment Search Tool) in three additional sauropsid genomes available in the Whole Genome Shotgun (WGS) database: *Alligator mississippiensis* (American alligator, Crocodylia) and two snakes, *Ophiophagus hannah* (king cobra, Squamata) and *Python molurus* (Indian python, Squamata).

(iii) No hit was obtained when blasting the following genomes with sauropsid and mammalian *AMTN* sequences: the bird *Anas platyrhynchos* (mallard duck, Anseriformes), the turtle *Chelonia mydas* (green sea turtle, Testudines), the anuran *Xenopus (Silurana) tropicalis* (clawed frog, Amphibia) and the African coelacanth *Latimeria chalumnae* (Coelacanthiformes). However, as *AMTN* is located immediately upstream *AMBN* in mammalian and reptilian genomes, we used a synteny-based approach. We extracted 100 kb of genomic DNA (gDNA) upstream *AMBN* in these four genomes and explored this region with UniDPlot [30], a software designed to screen DNA regions showing weak sequence similarity [31]. The search was performed using UniDPlot with mammalian and sauropsid *AMTN* sequences and provided a predicted *AMTN* sequence in these four species.

AMTN sequences obtained either from cDNA sequencing or from sequenced genomes available in public databases can be found in Additional file 2 and at [32].

RNA extraction and PCR amplification of Amelotin transcripts

The lower jaw of a juvenile specimen of the following species was used for RNA extraction: *X. tropicalis*, *A. carolinensis*, *Python regius* (royal python, Squamata) and *Takydromus sexlineatus* (long-tailed lizard, Squamata). The primers were designed using Primer3 v.0.4.0 [33,34] taking into account the *AMTN* sequences of *X. tropicalis*, *A. carolinensis* and *P. molurus* obtained *in silico* (Additional file 3).

Immediately after dissection, the jaws were immersed in RNAlater (Qiagen). Total RNAs were extracted and purified (RNeasy Midi Kit; Qiagen, France), and converted into cDNA (RevertAid™ H Minus First Strand cDNA Synthesis Kit; Fermentas, France) using an oligo (dT)18 primer. *AMTN* transcripts were recovered by PCR amplification using GoTaq DNA polymerase (Promega, France), as previously described [15]. Sequencing was performed by GATC Biotech.

Jaw transcriptome

Caiman crocodilus, 454 sequencing

The lower jaw - *i.e.* mainly containing teeth, bone, cartilage, skin, muscle, and other tissues - was dissected from a 2 year-old *C. crocodilus*, cut into small pieces of about 5 mm-long each and flash frozen in liquid nitrogen. Tissues were finely ground in liquid nitrogen with a mortar and pestle and extracted following the protocol previously described [35]. Total RNA quantity and quality was checked by NanoDrop spectrophotometer (ThermoScientific, Wilmington, DE, USA) and by a capillary electrophoresis in RNA 6000 Nano Lab-Chip (Agilent-Agilent Bioanalyzer). Four RNA extractions for a total of 17 µg were used for transcriptome sequencing. 454 sequencing

(half a run) was commissioned to GATC Biotech (Konstanz, Germany).

Other species, Illumina sequencing

P. waltl (6 month-old), *T. mauritanica* (adult). The lower jaw was dissected, immediately immersed in RNA later (Qiagen), cut into small pieces, and frozen in liquid nitrogen. Samples were transferred into homogenization tubes containing 2.8 mm ceramic beads and 2 mL of RLT solution (Qiagen). Tissues were disrupted with the Minilys homogenizer (Ozyme), three times for 15 sec at 5,000 rpm. Total RNA was extracted following the protocol of RNeasy Fibrous tissue mini kit (Qiagen). The quantity and quality of RNA were analyzed by Experion RNA StdSens chip (Bio-Rad) and using an Experion Automated Electrophoresis system (Bio-Rad). Illumina sequencing [one run, 50 base pairs (bp) paired end] was commissioned to GATC Biotech.

Transcriptome screening

The sequenced jaw transcriptomes (see below “Jaw transcriptome sequencing”) of the caudate amphibian, *Pleurodeles waltl* (sharp-ribbed salamander, Amphibia), and two sauropsids, *Caiman crocodilus* (spectacled caiman, Crocrodilia) and *Tarentola mauritanica* (common wall gecko, Squamata) were assembled at ISEM-Montpellier 2 (France) and screened for *AMTN* transcripts with BLAST using the Montpellier Bioinformatics Biodiversity (MBB) platform [36].

Alignment, signal peptide and post-translational sites

The protein-coding regions of *AMTN* were translated into amino acid sequences and aligned to mammalian *AMTN* using Se-AL v2.0a11 [37]. The putative signal peptides were analyzed using SignalP 4.1 [38,39] and putative remarkable sites were identified using Prosite database [40,41].

Histological analyses

One adult *P. waltl*, and several young adults *A. carolinensis* (3 month- to 2 year-old) were used. Immediately after dissection, the lower jaw quadrants were fixed in a mixture of glutaraldehyde (1.5%) and paraformaldehyde (1.5%) in PBS for 2 h, at room temperature. They were demineralized for three weeks, under gentle agitation at 4°C, in the same fixative to which 5% EDTA was added. The solution was changed every two days. After washing overnight in PBS, tissues were post-fixed for 2 h in 1% osmium tetroxide, rinsed in PBS, dehydrated through a graded series of ethanol then immersed in propylene oxide prior embedding in Epon 812 (EMS). 2 µm-thick sections were obtained using a Reichert OMU-3 ultramicrotome, deposited on a glass slide, stained with toluidine blue, and photographed with an Olympus

BX61 microscope equipped with a QImaging camera using Image Pro Plus software (Media Cybernetics, Bethesda, MD).

In situ hybridization

cDNA cloning and RNA probe synthesis

AMTN transcript fragments were amplified from *A. carolinensis* (556 base pairs, bp) and *P. waltl* (703 bp) cDNA, using primers designed from the gDNA and transcriptome sequences, respectively (Additional file 3). Once each cDNA fragment of interest was recovered (QIAquick Gel Extraction Kit; Qiagen, France), 4 µl of the purified cDNA were inserted into a pCRII-TOPO plasmid vector containing T7 and SP6 promoters for *in vitro* RNA transcription (TOPO-TA cloning kit; Invitrogen, France), and transformed into competent *E. coli* TOP10F' bacteria. Colonies containing the vector and the insert were selected for plasmid purification (QIAprep Spin MiniPrep Kit; Qiagen, France). Purified plasmids were linearized by PCR using M13 forward and reverse primers and the sense and antisense RNA probes were synthesized using SP6 and T7 RNA polymerases (Riboprobe Combination System SP6/T7; Promega, France) in the presence of digoxigenin-UTP (Roche, France) and purified (ProbeQuant G-50 micro columns; GE Healthcare, France).

Tissue processing and in situ hybridization

The jaws were dissected in quadrants and fixed overnight, at 4°C, in Formoy (30% formaldehyde 37%, 10% acetic acid and 60% ethanol) solution. Tissues were demineralized in 10% acetic acid for 20 to 30 days at room temperature and under gentle agitation. The solution was changed every two days. Samples were then dehydrated through an increasing series of ethanol, shortly immersed in toluene and embedded in Paraplast (Sigma, France). The sections (8 µm-thick) were obtained with a Leica RM2245 microtome and deposited on Superfrost PLUS slides (Fisher Scientific, France).

The sections were dewaxed in toluene, rehydrated through a decreasing series of ethanol, then in PBS, treated with proteinase K (0.6 µg/ml) for 5 min at 37°C, rinsed in PBS, post-fixed for 30 min in 4% paraformaldehyde, rinsed again in PBS and then in 2× SSC. The slides were incubated overnight, at 65°C, with the digoxigenin-labeled antisense probe (0.25 ng/µl) in the hybridization buffer (50% formamide, 10% dextran sulfate, 1× salt, 1× Denhardt, yeast tRNA 1 mg/ml). The following day, the slides were washed three times, at 65°C, in the washing buffer (50% formamide, 1× SSC, 0.1% Tween 20), and rinsed, at room temperature, in the Maleic Acid Buffer Tween (MABT), pH 7.5. Non-specific binding sites were blocked for 2 h in a blocking solution (2% blocking reagent, 20% goat serum in MABT). Then, the slides were

incubated overnight with the anti-digoxigenin antibody coupled to alkaline phosphatase (final concentration 750 mU/ml) in the blocking solution. After four baths of MABT, the slides were rinsed in NTM pH 9.5 (NaCl, TrisHCl, MgCl₂). The digoxigenin-labeled probes were revealed at 37°C using NBT/BCIP (nitro blue tetrazolium chloride/5-bromo-4-chloro-3-indoyl phosphate). The slides were mounted in Aquatex mounting medium (Merck, France), and photographed (Olympus BX61 microscope).

Ethics statement

All animal experiments conformed to the directives of the European parliament and of the council of 22 September 2010 on the protection of animals used for scientific purposes (Directive 2010/63/EU) and the French Rural Code (Article R214-87 to R214-137, Decree n° 2013-118 of 1st February 2013).

Results

Amelotin gene structure in sarcopterygians

A total of 17 *AMTN* sequences of sarcopterygian species were obtained using *in silico* screening of public databases, RT-PCR on jaw cDNA, and screening of assembled jaw transcriptomes: six species representative of mammalian lineages (*Homo sapiens*, *Mus musculus*, *Bos taurus*, *Loxodonta africana*, *Monodelphis domestica* and *Ornithorhynchus anatinus*), eight sauropsids (two crocodiles: *Alligator mississippiensis* and *Caiman crocodilus*; three lizards: *Anolis carolinensis* - *AMTN* referred to as [GenBank gene ID: LOC100554538] -, *Tarentola mauritanica* and *Takydromus sexlineatus*; three snakes: *Ophiophagus hannah*, *Python molurus* and *P. regius*), two amphibians (one frog: *Xenopus tropicalis*; one salamander: *Pleurodeles waltl*), and one coelacanth (*Latimeria chalumnae*). Genbank accession numbers of *AMTN* sequences obtained from cDNA are indicated in Additional file 1. Most sequences included either complete or partial 5' and 3' untranslated regions (UTRs). No alternative splicing of *AMTN* was detected in the PCR products obtained from the cDNA of all non-mammalian species used in this study. In the gDNA sequences analyzed in GenBank, *AMTN* was always found upstream *AMBN*, from 5 kb in *X. tropicalis* to 73 kb in *B. taurus*.

The exon-intron boundaries of nine non-mammalian *AMTN* sequences were inferred either from the comparison of cDNA and gDNA sequences obtained for the same species (*A. carolinensis* and *X. tropicalis*) or from sequence comparison of related species (*P. molurus*/*P. regius*/*O. hannah*, *A. mississippiensis*/*C. crocodilus*, and *T. sexlineatus*/*T. mauritanica*/*A. carolinensis*). The *AMTN* sequences in *P. molurus* and *P. regius*, on the one hand, and in *A. mississippiensis* and *C. crocodilus*, on the other hand, were nearly identical (98.8% and 97.3% nucleotide

identity, respectively). For *H. sapiens*, *M. musculus*, *B. taurus*, *L. africana*, *M. domestica* and *O. anatinus* the exons were previously identified [17]. For *P. waltl* *AMTN* (cDNA data only) the exon-intron boundaries were estimated from the alignment of all *AMTN* sequences. However, the limit between exon 4 and exon 5 could not be clearly defined because of the high variability of this region when compared to the homologous region in other *AMTN*s. For *L. chalumnae* (gDNA data only), the exons were identified with UniDPlot then aligned to other *AMTN* sequences.

The *AMTN* structure resulting from these comparisons is represented in Figure 1 for the main sarcopterygian lineages (Placentalia, Marsupialia, Monotremata, Crocrodilia, Squamata, Caudata, Anura and Actinistia). A total of 12 exons has been identified in the various sarcopterygian lineages, comprising the nine exons previously known in mammalian *AMTN* (exons 1–9), and three newly identified exons, *i.e.* two exons located between exons 2 and 3, and one exon inserted between exons 3 and 4. In order to conserve the current nomenclature of *AMTN* exons, we named 2b, 2c and 3b these three new exons, the former exons 2 and 3 becoming exons 2a and 3a (Figure 1). The largest number of exons identified in a single *AMTN* was eleven in squamates (lizards and snakes: exons 1, 2a, 2b, 2c, 3a, 3b, 4, 5, 6, 7 and 8; lack of exon 9), and the smallest was seven in *X.*

tropicalis (lack of exons 2b, 3b, 4, 5 and 9). It is worth noting that the opossum *AMTN* (gDNA data only) may have either the same structure as in other mammals, *i.e.* the short exon 8 plus the exon 9 as suggested by Gasse et al. [17], or the structure in non-mammalian *AMTN*, *i.e.* only a large exon 8 as proposed by Kawasaki and Amemiya [12]. It is also possible that both *AMTN* sequences could be present in opossum as splice variants (Figures 1 and 2). Similar features could exist in platypus, for which also only *AMTN* gDNA is available (Figure 1).

The 5' UTR of *AMTN* is composed of a variable number of nucleotides (nt), most in exon 1 plus 15 nt located at the beginning of exon 2a. In non-mammals, the sequence ends with exon 8 that is larger than in placental mammals and comprises the stop codon followed by the 3' UTR. The latter is also composed of a variable number of nucleotides. In placental mammals, the sequence ends with exon 9 that includes the termination codon and the 3' UTR. In non-placental mammals, platypus and opossum, both structures could occur (see below).

Particular features of Amelotin in sarcopterygians

A single signal peptide (SP) encoded by exon 2a was detected in the N-terminal region of all *AMTN* obtained in this study (Figure 2). The SP cleavage site was predicted to occur between position 16 (either Ala, Cys, Gly or Ser, depending on the species) and 17 (Leu, Lys or

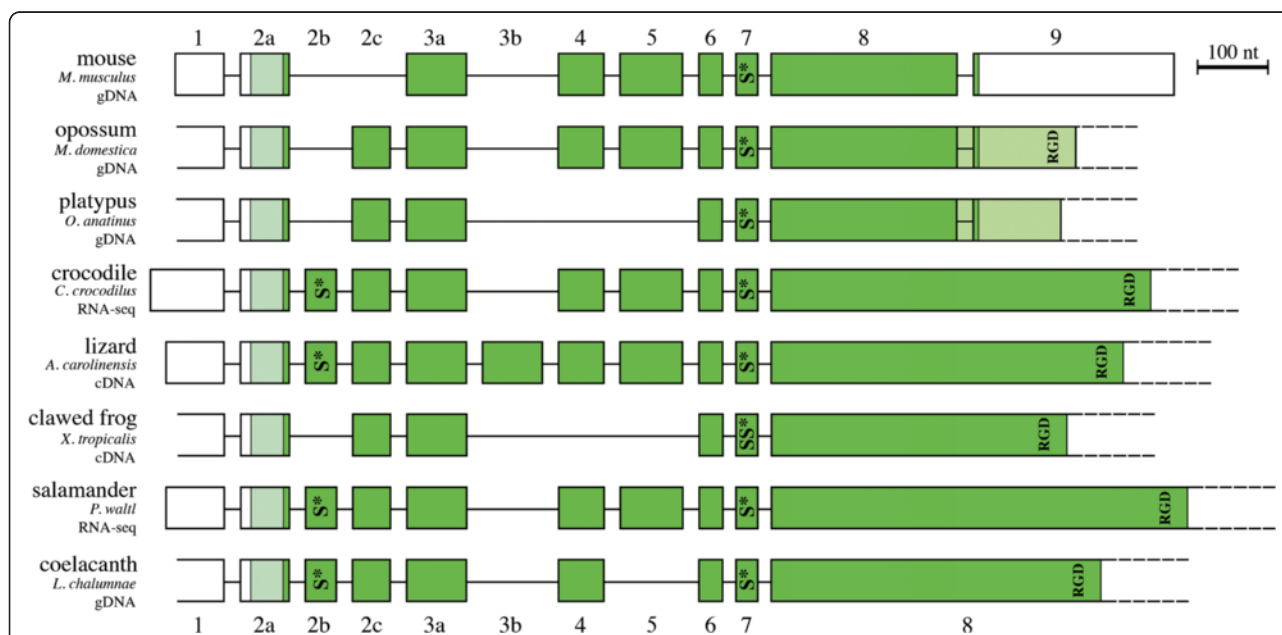


Figure 1 Amelotin structure in the main sarcopterygian lineages. The origin of the data is indicated below the species names. cDNA means that the sequences were obtained from PCR sequencing and RNA-seq means that the sequences result from transcriptome sequencing. The exon-intron boundaries were defined using comparison of cDNA and gDNA sequences (mouse, crocodile, lizard and clawed frog), or only cDNA (salamander), or only gDNA (opossum, platypus and coelacanth) sequences. The lizard gene structure is also applicable to snakes (*O. hannah* and *P. regius*). Two alternative ends of the opossum and platypus *AMTN* are proposed (dark and light green) depending on whether or not intraexonic splicing occurs in exon 8 (see text). A total of 12 exons (blocks) were identified. Coding regions in dark green; signal peptide in light green; non-coding regions in white. Introns (lines) are not at scale. S*: putatively phosphorylated serine.

	exon 2a	exon 2b	exon 2c	exon 3a
Homo	MRSTILLFCLLGSTRSLP	-----	-----	-QLKPALGLPPTKLPDQ-GFLPNQQQSN-Q
Mus	.KTM...L....AQ...	-----	-----	K..N..S.V.A..PT.G.VTP.....P...
Bos	.KAA.....L...	-----	-----	M..N..V.....V....-A..L.P..P..
Loxodonta	.KT.....Q...	-----	-----	K..N.....SAA..V...-A..L...P...
Monodelphis	.KTAV.....TIQ...	-----	ILQLMSMPVPGHGQQQAQ	Q..Y.GV....P..GLE.-PA.FTP.....
Caiman	.KTV...L....TAF...	VRQAGTFL---PVSNSRE	ILQLMRLYSSLGNIPQQTQ	Q.VN.G....AQ.L...-TA.LA...A..
Ophiophagus	.EVI...LS...L.F.T.	INHIGGSL---ATSSSKE	VLRLHLRYIAISNTPQQAQ	SRQR-.I...A..V..LNLPG...-PP.V-
Python	.KIV...L....LAF.K.	VNQAARIL---ATSNSRE	ILRLLRQYRATGNTPQQTQ	PRPRVVP...A..V..MNLPE...-LP.G-
Anolis	.KIV...LS...L.FC...	VNQFGRRF---ATSNSRE	ILRLMQRKAQGNVPQQTQ	QRSN.GI...A..V...H-P.A.-HIPSE-
Takydromus	????...LP...L.I...	LNQMGRIL---ATSNSRE	ILRLMQRKAMGNNPQQTQ	QRPRLGA...A..V...NPSV...-VP.E.
Tarentola	.KIV..FLSF..L.IA...	ISPLERAI---ATSNSRE	ILRLMQRKAMGNNPQQTQ	QRSN.GF...A..V...-TA.A.-LP.E-
Xenopus	..VMF..L...RASLGF.	-----	MLHLMQMFNLLGRVPEQSQ	-RI-.H.FVA.SQ.V-QLH..QLRYMHP-F.
Pleurodeles	..T...L....TSIAF.	VREAERIL---SASNSGE	MLQQLMQLYNMLGNTPEQTQ	-.VH.GH...AQ.I..MTAQQTQ..L.QF.
Latimeria	.KTIM...F..TAVAV.	VHSGVRSVHGGVAASNSRE	RTPLLV---SQQPQLQQGQ	PRI-LQ.QTF.ER-V-QV-PVQ..I.-GQQ.
	exon 3b	exon 4	exon 5	
Homo	-----	-----VFPFSLSLIPLTQMLTLGPDL--HL	LNPAGMTPTGTQTHPLTLGGLNVQQQLHP--H-	
Mus	-----I.....L.....S...-P.	F.....PH.AH.L.F...P..G...Q...-Q-	
Bos	-----S.....H.....SN...-Q.PS.....L...A...K...Q...-Q-	
Loxodonta	-----L.....S...-QQT.A....F..N...TIK...QS--Q-	
Monodelphis	-----L..P..GQ....FSV..T.M--Q.	MT..T.LL..I..L.M...DTSIAP.VN.-QQ-	
Caiman	-----T.NF...RVWPF.A.I--N.	V.G...GV.I...L.TGA..A.TPH--V.-QQG	
Ophiophagus	-----	-----NL.V..-V.QN.IFPI--M--NY	.STLL.ILSTI..L.IVG..MT.P...-PGQA	
Python	VTPFEWPFNTFPVI---SQLA.EVGGPNLQ	-----N..VF...QN...YPI--W--NY	.TLL.ILSTM.AL.AAG..MTIP...L.-GQP	
Anolis	IPAFERPFANYPILT--AQNPQELGSPTLQ	-----N..GFNVL...VPI--I--NY	.ALLL.ALST...Q..PG...IP...L.PPQS	
Takydromus	AVPVWFVFANFPVTSNFPQNPSELGSPSIQ	-----NI.GYNVL.F...PM--..-NT	.ALLL.ALSTP..L.GAGV.TTMP...L.-PQP	
Tarentola	VTPLEWPFNTFPMP--PKIPSELGTTNLQ	-----HI.GFN.L.F...IP...I--NT	.TLL.LGGLPS.QT.PV..V..P...L.PSQ-	
Xenopus	-----	-----PSENVFGNL.I.PPLSMPGFPQS.G--NQ	--.P-.VM.YP.AL.MNV.EMT.HHSMF.HP.H	
Pleurodeles	-----	-----	-----	
Latimeria	-----	-----LL..YRFV...L.AQ..GVHAQQ	-----	
	exon 6	exon 7	exon 8	exon 9
Homo	VLPIFVTLGQAQ	GTILS-SEEL	----PQIFTSLLIHSL-----FPG-----GILPTSQAGANPDV----QDGS-----L-PAGGA	
Mus	M...I.A....AL.....	-----	-PLAS...G.L.P.....A.P.SG...TK.....N.V.....TRQ.	
Bos	M..VI.AHF...	-----	-QGTS..L.G..F.P.....A.....A.....N.I.....Q.	
Loxodonta	L...I.A....A.....	-----	-PMA...AG.L.QP.....A...L...T.E....E.I.....Q.	
Monodelphis	M..VL.A.I...AVR.....	-----	-PIA...G.L.QPF-----GT-----AT...G.S.IDANT...AA.....QT	
Caiman	..LILG.M.P..LGV...M	QTDA..LAG..L-LG-----LQ-----F.QAN..S.I.SEG----P.IV-----F...QT		
Ophiophagus	M...I...M.P..AV...M	-----S.PS.F..G.L.-PG-----MQ-----AMF.SG..EPP.EA.....F...V.Q.		
Python	M...I.A.M.P..AV...M	-----S.PS.F..G.L.-PG-----MQ-----AL..SG..EPP.EG-----GEEL-----Q.		
Anolis	MF..IF..M.P..V...M	-----PT..VMAAFLL-PG-----L.....LF.SG.S..L.ED-----EL-----QV		
Takydromus	M...I.A.M.P..AV...M	-----SPQS..V-GVL.-PG-----MQ-----FF.LG...L.EG-----ESL-----NQ.		
Tarentola	I...IFA.M.P..AV...A	-----QSFS.F..G.L.-PG-----MQ-----ILI.SG..E.L.EG-----E.L-----Q.		
Xenopus	MS..MFA..RQ..ALSG..D...N	-----VLPGV.MIPL-----SA-----LDEN.ATVH...VII.NSLIQEQPV-----N...QH		
Pleurodeles	LF.LII..M.Q..LLM...M	-----PFL..V.AGV.MPPFGPILPALPVLP.VPAFAGLP.LP.LL.GA.R.AA----GA.ISLDEQEAI--M.Q.		
Latimeria	A.AVNIP..VP..--ST...M	-----VQMSTGVLIPIVDDPA-----VP-----V.AIEMPV-----PG.I-----NP		
	exon 8	exon 9		
Homo	GVNPNATQGTAGRLP--TPSGT-DDDFAVTTPAGIQRSTHAIIEEATTESAN	GIQ* (209)		
Mus	.AKAVN...TP.HVT---GV.D...YEMS...LR.A..TT.GT.IDPP.	RT.* (213)		
Bos	.A...A...EDPFS-----S.....GRPTT..TP.G.PK	...* (211)		
Loxodonta	.L...I.R..EKHPS--S.D--SV.G...L..GMRTTG.T...P.	E...* (213)		
Monodelphis V1	.G...IW..SE.Q...SP--V.EA.I.V...K---T.GS...AP.	.TD* (229)		
Monodelphis V2	.G...IW..SE.Q...SP--V.EA.I.V...K---T.GS...APN	-----GGFFQTHIMPLGPKETAEGSMRQKFLGDPSTLADM		
Caiman	.M.QGA---P.Q...S.E..-A.VSGA.L...-KG-SQTP.SI..A.S	-----GVYTPPGFRQLDSEQV-TDASFAEP--AILLNM		
Ophiophagus	-----N.E.....A...KVFPATDGLS.IPG	-----ELYTPSGFRQSDTGTSG---LFLEP--TADINM		
Python	.S-----E.....A...KVFPATDGLS.IPV	-----ELYTPSGFRQSDTGTSG---MFVQP--TVDISM		
Anolis	.T-----Q.N...-F.E.S.....A...KGS.P.T.DGLNVAPG	-----AFYTPSGFRQPGVVTNE---VFVEP--TGGIHM		
Takydromus	.S-----Q.N...-F.E.S.....A...KISPTASDGLS.V.S	-----GVYTPSGFRQPGVVTNG---V????????????		
Tarentola	.S...N--S.Q...-F.E..-A.A---A...KVSPGMHDDLSTG	-----GLNTPSGFRQPGVNHGATQDPPFAERTILVKLNM		
Xenopus	..ST.I.NKILPE..WVI.TQA	-----AQNDVSV.GIIK-----GSYTDPLPTNTPDIDLNA-----PEP--TM--SM		
Pleurodeles	.L..NK.RETASPA.GV..AQDTGEVLAV.V..LRKGV-TGTDG-AGLLQ	-----TFTPPAGLRGFPPTESA-TEVMFVETPTGLVTET-		
Latimeria	.GN.S...-DT.--I.GNP--VGGQP.V.T.VRKIAPTA.VSV.DAVNQGIFQPVAGATPTAAGLKKTVQDEDRPDVIFVEPSPPCDTP			
	exon 8			
Monodelphis V2	MPSNTRFPSSVSELIPTGGNMIPLVAPQ-DPDSATSPTMLILRGDTHLPV* (312)			
Caiman	EANEIQAPPTT---DIGTGTINSINLQT---QGYVNIQVSPVGRDRLPLANRDVRLREYKRSRA* (328)			
Ophiophagus	EPSELREPTSPVKFDMSNMQSP-----HNLSQPLVRGDSHIPMNTVASKPLNLP* (294)			
Python	EPSELREPTSLVKLDMGNMQSP-----HNLSQPLVRGDSHILVNTVASKPLNVP* (325)			
Anolis	EPSELREPTSLVGLDKGNQKL-----QNLQSPVGRDSSYMPMTTASPKLKP* (334)			
Tarentola	EPSELREPTTMARPEDDNSLGG-----HTLAQSPVGRDRHMPVTTVVSKLLREP* (348)			
Xenopus	GRDNDLTVNAHTMGEENWILCNS-----YVPDLCELNHIVRGDIYIPIKTPVYFKNGQIQGNRNTESY* (252)			
Pleurodeles	SPDGVDE-----RLPHSYRP-----QNQRFNVSARGDQNLAMAVPDLKPLRKHKKRRA* (355)			
Latimeria	NGMRQLTFSSELITVSPAESAITISSVTNSMPKKNKWHIASKAGLRGDIAGSLKAAGKKPIQNY* (306)			

Figure 2 (See legend on next page.)

(See figure on previous page.)

Figure 2 Amino acid alignment of the Amelotin sequences used in our study. The sequences are ordered according to species relationships (see Additional file 1 for names and references). Non-mammalian tetrapod sequences are aligned against the human sequence and four AMTN sequences representative of the main mammalian lineages. The coelacanth (*Latimeria*) sequence is aligned (only gDNA sequence) at the bottom. Two alternative ends of the opossum AMTN (*Monodelphis* V1 and V2) are proposed depending on whether or not intraexonic splicing occurs in exon 8 (see text). The specific length of each sequence is indicated in brackets at its end. Signal peptide underlined. SxE and SxxE motifs (encoded by exon 2b and exon 7, respectively) and RGD motif (encoded by the end of exon 8) highlighted in grey. Vertical lines: exon limits; (:): residue identical to human AMTN residue; (-): indel; (?): unknown amino acid; *: stop codon.

Phe) with a probability > 0.9. In most AMTNs, the SP is composed of 16 (15 in *X. tropicalis*) amino acids (aa), and the first two residues of the mature protein are encoded by the last six nucleotides of exon 2a. Given the different AMTN structure in the various lineages, the length of the encoded protein varies from 252 aa in *X. tropicalis* to 355 aa in *P. waltl*.

Amino acid alignment indicated that the putative CK2 phosphorylation site (SxxE/D) previously identified in mammals in the region encoded by exon 7 is conserved in sarcopterygian AMTN (SseE) (Figure 2). In addition, in non-mammals a conserved SxE motif (putative phosphorylation site) was found in the region encoded by exon 2b, with the exception of *X. tropicalis* AMTN that lacks this exon. In the latter species, however, AMTN possesses a SxxD (SgsD: aa 78–81) and a SxE (SeE: aa 82–84) phosphorylation motifs adjacent one another in the region encoded by exon 7. A conserved Arg-Gly-Asp (RGD) motif (putative integrin-binding site) was found in the C-ter region encoded by exon 8 in non-mammals but it is missing in mammals, with the possible exception of marsupials (see below and Figure 2).

In addition to these features, in sauropsid AMTN, exon 2c and exon 3a encode the conserved motifs “PQQTQ” and “GLPPA”, respectively; also, the motif “KLVPD” encoded by exon 3a is well conserved in squamates. In the latter no particular motif is found in the AMTN region encoded by exon 3b (only found in squamates) while a conserved motif “PQQL” is encoded by exon 5. Also, exon 6 encodes 12 amino acids that are well-conserved in all species studied. No particular function is known for these conserved motifs.

Intraexonic splicing in mammalian Amelotin exon 8

In non-mammals, AMTN exon 8 is in average 975 bp-long and encodes a variable region of the protein, the C-terminal region, which houses a well-conserved RGD motif (Figure 2). Exon 8 also encodes the stop codon, and contains the 3’UTR. In contrast, in placental mammals, exon 8 is shorter than in the other lineages. A large part of the 3’ region, including the region encoding the RGD motif, was lost and does not encode the termination codon, and is followed by intron 8 and exon 9. It has previously been suggested that the 3’ end of exon 8 has been spliced out in placental mammals [12]. Here, we provide an alignment of the 3’ extremity of mammalian exon 8 with the homologous intronic region in sauropsid sequences showing that nucleotide substitution in an ancestral mammalian exon 8 generated a favorable environment for an intraexonic splice donor site (Figure 3). This intraexonic splicing occurs within a codon, creating a phase 1 intron (*i.e.* the last nucleotide of exon 8 should be added to the two first nucleotides of the next exon to form a codon). A ninth exon possessing eight nucleotides followed by a stop codon and the 3’UTR was then recruited. In platypus and opossum, however, screening of the gDNA sequence provided two putative sequences depending on whether the intraexonic splicing occurs in exon 8 or not (Figure 2). In the former hypothesis the AMTN structure in the monotreme and marsupial lineages would be similar to that observed in placental mammals, *i.e.* a short exon 8 followed with exon 9 [17]. If the intraexonic splicing did not occur, an RGD motif would be encoded in the C-ter region of the opossum AMTN [12] but not in the platypus one (not shown). In opossum,

Homo	GAAGCCACCACAGAATCAGCAAAT Ggt aaattctcctagcttgaacatg
Mus	GGAACCACCATAGATCCACCAAAT Agt aagttgtcctagggtagaacatg
Bos	GAAACCCACAGGATCACCCAAA Ggt aggttctccaagccaggaagaca
Loxodonta	GAAACCACCACAGAGTCACCAAAT Ggt aagttctccaagctggaaaaatg
Monodelphis	GGGAGCACCACCGAGGCACCAAAT Ggt gggtttttccaaccatataat
Caiman	GAGAGCATCACTGAGGCAGCCAGT GGGGTGTATACCACTCCACCTGGCTT
Python	GATGGACTGAGTGAATTCAGAT GAGTTGTACCCAACCTCCCTGGCTT
Anolis	GATGGCCTGAATGTAGCCCAAGT GCCTTCTACCCAACCCCTCTGGTTT
Takydromus	GATGGCTAAGCGAGGTTGCAAGC GGGGTATACCCAACCCCTCAGGCTT
Tarentola	GATGACCTGAGCGGGACAGCAAAT GGACTGAATCCAACCTCCCTCCGGATT

Figure 3 Intraexonic splicing of Amelotin exon 8 in mammals. The nucleotidic region of the AMTN exon 8 of five mammals and five sauropsids were aligned. Note the intraexonic splice donor site (arrow) that appeared in an ancestral mammal. A favorable environment for splicing (highlighted in grey) was created when the sequence was changed into Ggtg (then conserved in monotreme and marsupial lineages as shown here) and then into Ggta in an ancestral placental. Coding sequence in bold and upper case letters; new intron in lower case letters.

the amino acids encoded by this exon 8 region can hardly be aligned to the homologous, non-mammalian sequences (Figure 2). In platypus alignment of this region is not possible (not shown).

Amelotin in toothless sauropsids

AMTN was searched in the sequenced genomes of the bird *Anas platyrhynchos* and of the turtle *Chelonia mydas* in order to check whether the gene is active or has been invalidated as a consequence of tooth loss in these two lineages. In the two species, our synteny-based approach allowed to identify ϕ *AMTN* in the gDNA region immediately upstream ϕ *AMBN*, as expected when taking into account the gene synteny observed in mammalian and sauropsid gDNA (Figure 4A). The genomic distance between the two pseudogenes is 8 kb in *A. platyrhynchos* and 1 kb in *C. mydas*. These findings support that *AMTN* is only a tooth protein in the sauropsid lineage.

In *A. platyrhynchos*, most of the ϕ *AMTN* sequence is hardly recognizable in the non-coding gDNA region of scaffold247. Only two exons (2b and 6) could be identified within the 15 kb genomic region upstream ϕ *AMBN*. They display many nucleotide substitutions and indels (Figure 4B). In *C. mydas*, *AMTN* is also a pseudogene found in contig173658. Numerous mutations have accumulated in the sequence, but several exons (2a, 2b, 4, 5, 6, and 7) were identified using UniDPlot within the 10 kb upstream ϕ *AMBN*. They display less variations compared to *A. platyrhynchos* *AMTN* (Figure 4B).

Searching for functional and invalidated exons in sarcopterygian gDNA sequences

Our results indicated the presence of a variable number of exons in sarcopterygian *AMTNs* (Figures 1 and 2). To verify whether exons were present but unidentified in some species, we screened target regions (intronic region

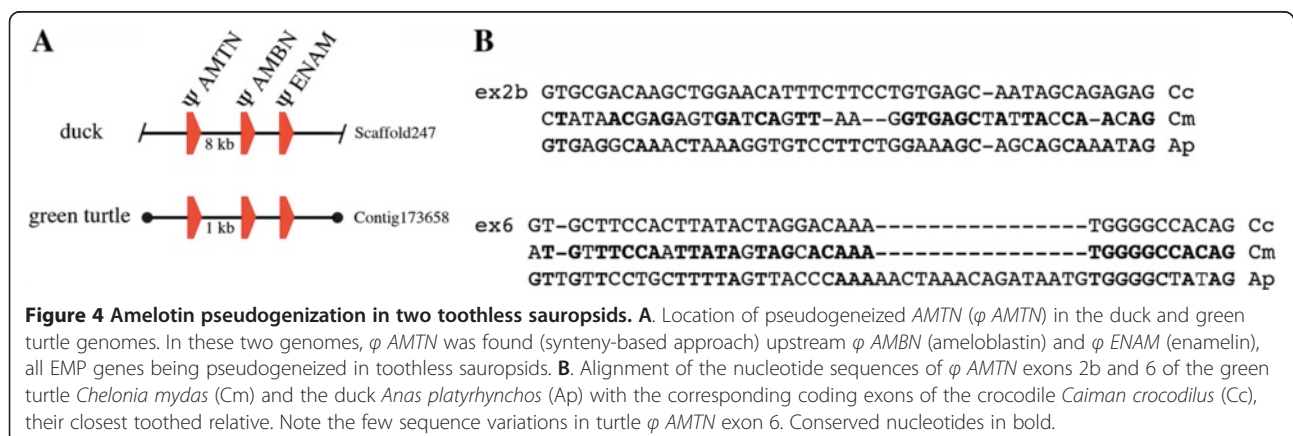
between two exons) in sequenced genomes available in Genbank.

Mammalian amelotin

In mammals, many *AMTN* sequences were previously obtained by blasting sequenced genomes, and the presence of nine exons was confirmed [17], but possibly eight in marsupials and seven in monotremes, depending on the intraexonic splicing in exon 8 described above. We looked for the putative presence of exons 2b, 2c and 3b in mammalian sequences by screening introns 2 and 3 of mammalian gDNA. We confirmed the presence of a putative exon 2c in *M. domestica* *AMTN* gDNA sequence (Figures 1 and 2), then in the homologous genomic region of two other marsupials (Tasmanian devil: *Sarcophilus harrisii*; tammar wallaby: *Macropus eugenii*) and of a monotreme (platypus: *Ornithorhynchus anatinus*) (not shown). This exon 2c (57 bp) possessed high nucleotide identity with sauropsidian exon 2c and displayed correct putative splice sites, which suggests that exon 2c is functional in marsupial and monotreme *AMTN*. Exon 2c was not found in placental mammals but weak nucleotide similarity in the homologous genomic region of various mammalian species (not shown) suggests that exon 2c was present in an ancestral placental *AMTN*, then invalidated early, before the diversification of current placental lineages. In contrast, neither functional nor pseudoexons 2b and 3b were found in any mammalian genomes studied to date, which suggests that these two exons were either not present in the *AMTN* sequence of the last common ancestral mammal or invalidated early in the mammalian lineage, and no longer recognizable in gDNA.

Sauropsid amelotin

In sauropsids, *AMTN* is composed of 11 exons in squamates (no exon 9) and of 10 exons in crocodiles (lack of exons 3b and 9) (Figures 1 and 2). The exon 9 found in all



mammalian *AMTN* was identified neither in sauropsid gDNA nor in cDNA, all sequences ending with exon 8. Blasting the genomic region (*i.e.*, 2 kb downstream exon 8) of sauropsids (*A. mississippiensis*, *A. carolinensis*, *P. molurus*, and *O. hannah*) using mammalian exon 9 sequence did not provide valuable hit. Exon 3b was identified in squamates only. We checked whether this exon was missed in *A. mississippiensis* gDNA, but no hit (even as pseudoexon) was obtained.

Amphibian amelotin

In amphibians, *AMTN* was found to be composed either of 10 exons (absence of exons 3b and 9) in *P. waltl* (caudates) or of seven exons (absence of exons 2b, 3b, 4, 5 and 9) in *X. tropicalis* (anurans) (Figures 1 and 2). Exon 9 was identified neither in *P. waltl* nor in *X. tropicalis* cDNA, the two sequences ending with exon 8. Blasting the genomic region (*i.e.*, 2 kb downstream exon 8) of *X. tropicalis* did not provide valuable hit. Similarly, exons 2b, 3b, 4 and 5 were not identified in the target genomic regions (introns 2 and 3) of *X. tropicalis* and no pseudoexons were found.

Coelacanth amelotin

Exons 3b, 5 and 9 were not found in coelacanth *AMTN* (Figures 1 and 2). We did not identify any of them, even as pseudoexons, when blasting the target gDNA regions (introns 3 and 4, and 2 kb downstream exon 8).

Amelotin expression during amelogenesis in lizard and salamander

Lizards and salamanders have polyphyodont dentitions - their teeth are continuously shed and replaced during the lifetime of the animal. Therefore, in a few, serially sectioned jaw quadrants of *Anolis carolinensis* and of *Pleurodeles waltl* we found various stages of tooth development, allowing the study of *AMTN* expression during various steps of amelogenesis in the two species (Figures 5 and 6).

Anolis carolinensis

In the late cytodifferentiation stage, ameloblasts have differentiated from the inner dental epithelium of the enamel organ and they are facing mesenchymal cells of the dental papilla differentiated into odontoblasts. As soon as a thin layer of predentin was deposited between the ameloblasts and odontoblasts, *AMTN* mRNAs were detected in the ameloblasts surrounding the forming teeth (Figure 5A, B). *AMTN* expression signal increased in intensity as enamel matrix was deposited and its mineralization started (Figure 5C-F). In tricuspid teeth, enamel matrix was deposited first on the central major cusp, then on the two adjacent minor cusps. *AMTN* expression weakened in the ameloblasts facing the major

cusp at the time enamel maturation progresses, while *AMTN* transcripts were strongly labelled in ameloblasts surrounding the minor cusps (Figure 5G, H). *AMTN* expression was still detected in reduced ameloblasts during late maturation stage just before the tooth root attaches to the dental bone (Figure 5I, J). After eruption, when the tooth became functional, *AMTN* transcripts were no longer detected in the inner dental epithelial cells (not shown).

Pleurodeles waltl

AMTN expression was monitored in larvae (from stage 34 onwards) and in adult specimens (Figure 6). In larval teeth dentin is covered first with enamelloid then with enamel, while in juvenile and adult teeth, dentin is covered with enamel only. The onset of *AMTN* expression is detected earlier in larval than in adult teeth, but only during early deposition of enamel matrix (Figure 6A). In contrast, in adults labelling appears when a thick layer of dentin is already present (Figure 6F, G). During enamel maturation, *AMTN* expression is roughly similar in both larval and adult teeth: transcripts are identified in the ameloblasts around the tooth tip and in those facing the recently deposited enamel matrix along the crown base (Figure 6B, H). Once enamel is mature, *AMTN* expression is no longer detected in the ameloblasts around the upper region of the tooth but is detected in the cells of the inner dental epithelium facing the mid region of the tooth shaft (Figure 6C, I). Before tooth attachment to the dentary bone *AMTN* is still expressed in the inner dental epithelial cells facing the dentin base and the forming pedicel (Figure 6D, J). *AMTN* is no longer detected in the latter region after tooth eruption (not shown).

Discussion

In this study, we combined RNA-seq data (transcriptomics), genomic data screening, isolation, characterization and expression of the *AMTN* gene to investigate the evolution of this SCPP in tetrapods. Our results suggest that *AMTN* was a component of the enamel matrix in the last common ancestor of tetrapods and that its structure changed and the function most likely changed in mammals, probably as a consequence of drastic events that occurred in the coding and/or regulatory region of the gene in the last common ancestor of mammals.

The evolutionary history of Amelotin reveals important structural modifications in mammals

According to its genomic position, *AMTN* could be related to *ENAM* and *AMBN* because *AMTN* is located close to *AMBN* and *ENAM* in the same DNA region, and always upstream *AMBN* in the genome of sarcopterygian species annotated to date [12,18]. This vicinity suggests that *AMTN* and *AMBN* could be closely related

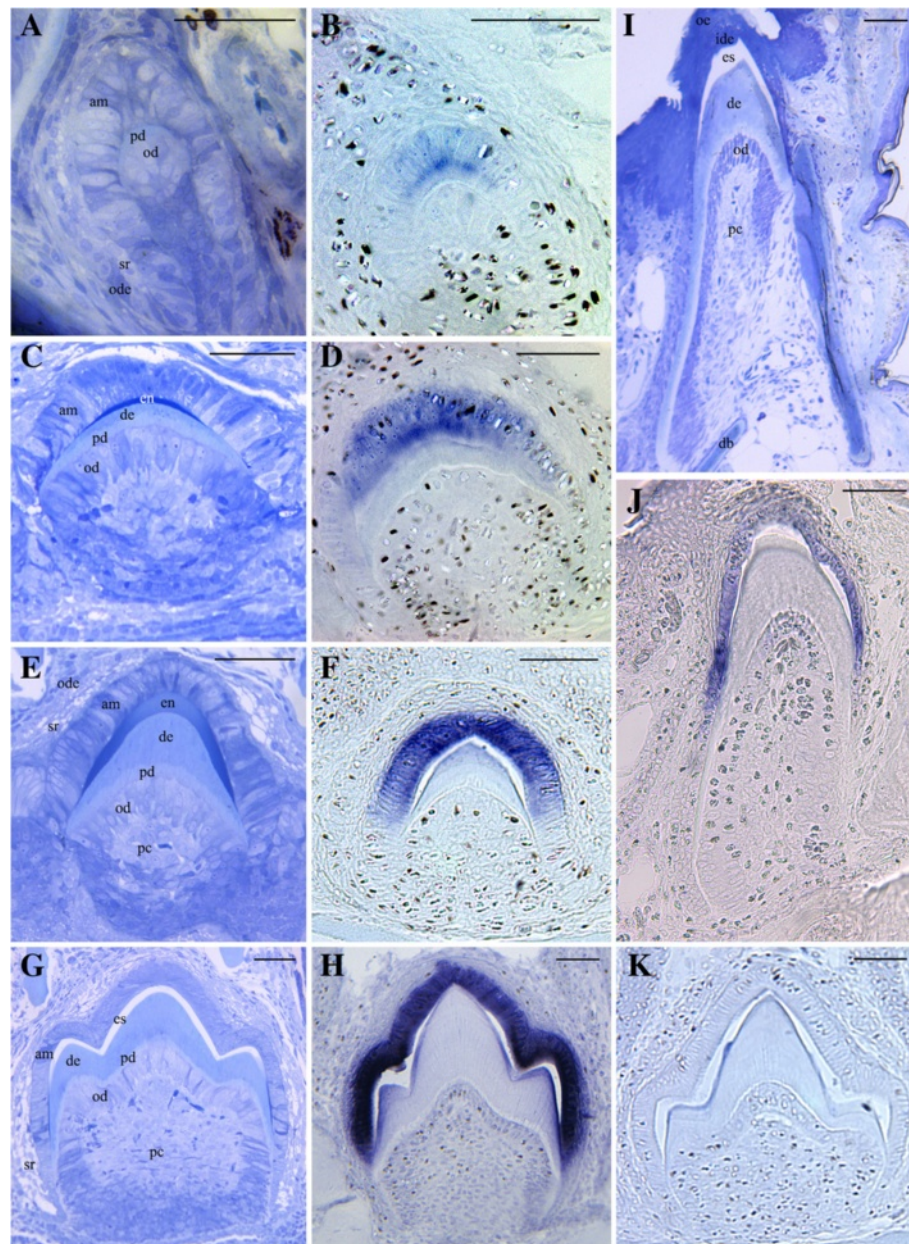


Figure 5 Amelotin expression during amelogenesis in the iguanid lizard *Anolis carolinensis*. Longitudinal (A-H, K) and transverse (I, J) sections of demineralized lower jaws (oral cavity on the top). In this lizard the dentition is heterodont: anterior teeth are moncuspid (A-F, I, J) and posterior teeth are tricuspid (G, H, K). A, C, E, G, I: Histology, toluidine blue staining; B, D, F, H, J, K: *in situ* hybridization with *AMTN* antisense mRNA probe; K: Negative control with *AMTN* sense mRNA probe. A, B: Late cytodifferentiation. *AMTN* transcripts are weakly labelled in the ameloblasts lining the predentin matrix. C, D: Early deposition of enamel matrix. *AMTN* transcripts are detected in the well-polarized ameloblasts facing the enamel matrix (dark blue in C). E, F: Enamel deposition. The ameloblasts along the deposited enamel matrix are well labeled. G, H: Enamel maturation. *AMTN* mRNAs are strongly identified in the ameloblasts facing the enamel layer. The latter is well mineralized with the exception of the regions covering the minor mesial and distal cusps. I, J: *AMTN* expression is still detected during late maturation stage before the tooth attachment process begins. am: ameloblast; db: dentary bone; de: dentine; en: enamel; es: demineralized enamel space; ide: inner dental epithelium; od: odontoblasts; odc: outer dental epithelium; oe: oral epithelium; pc: pulp cavity; pd: predentin; sr: stellate reticulum. Scale bars = 50 μ m.

SCPP genes, an hypothesis which is supported by the presence of remarkable motifs in the two proteins, in particular a SxxE motif encoded by a small exon in the middle region of the protein (exon 7 in *AMTN*, exon 12

in *AMBN*) [12]. Furthermore, the expression of *AMTN* and *AMBN* (but not that of *AMEL* or *ENAM*) is modified by the *FAM20C* kinase in mice [43]. Nevertheless, further data are needed in current representatives of

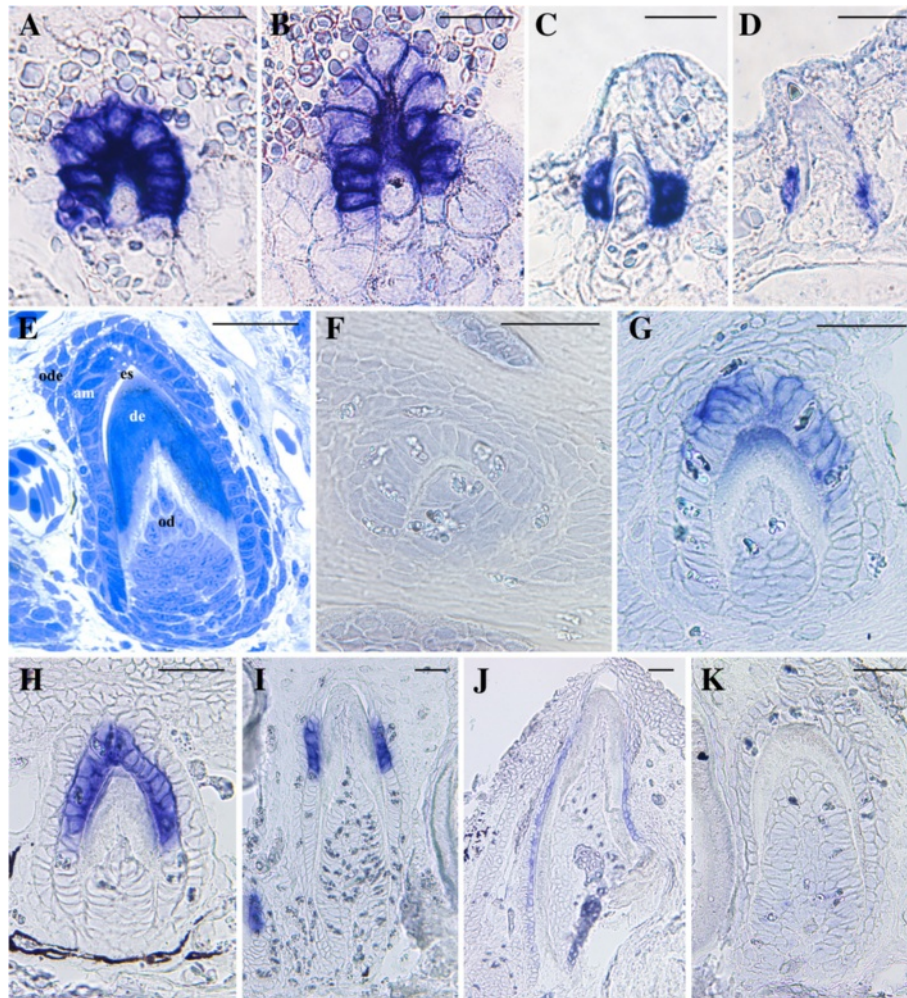
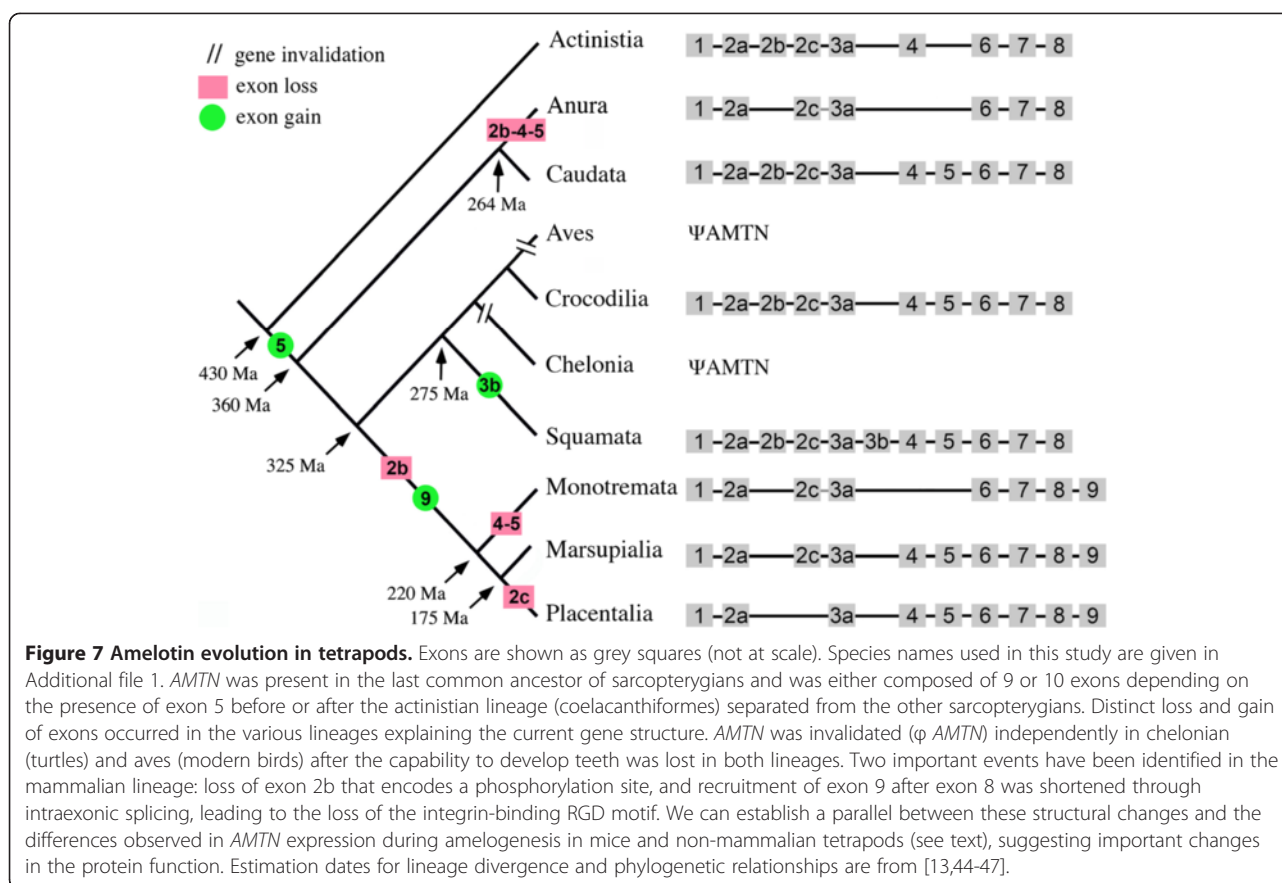


Figure 6 Amelotin expression during amelogenesis in the salamander *Pleurodeles waltl*. **A-D:** larval stages 34, 35, 36 and 38, respectively [42]; **E-K:** three year-old specimens. Transverse (**A-D, E, J**) and longitudinal (**F-I, K**) sections of demineralized jaws. **A-D, F-J:** *in situ* hybridization; **E:** histology; **K:** negative control. **A:** Enamel deposition on top of enameloid. The ameloblasts surrounding the enameloid cap express *AMTN*. **B:** Enamel maturation. Ameloblasts are strongly labelled along the crown base where enamel was recently deposited while labelling is weaker at its top where enamel is well mineralized. **C:** Late maturation stage. *AMTN* is no longer detected in the ameloblasts around the crown, but is identified in the cells at the surface of the dentin shaft, in a region lacking enamel. **D:** Tooth undergoing attachment process. Along the tooth base *AMTN* is still expressed in the cells of the inner dental epithelium. **E:** Differentiated tooth showing polarized ameloblasts. **F:** Early deposition of enamel matrix. *AMTN* transcripts are not detected, while thin layers of enamel and predentin matrix are observed. **G:** Enamel matrix deposition. *AMTN* mRNAs are clearly identified in the ameloblasts around the tooth top. **H:** Early enamel maturation. A strong *AMTN* expression is observed in the ameloblasts both facing the mineralized enamel and the recently deposited enamel matrix along the tooth shaft. **I:** Late enamel maturation. The ameloblasts are no longer labelled at the top of the tooth, where enamel is mature (empty space after demineralization), but are labelled in the cells facing the tooth matrix along the tooth shaft. **J:** Tooth in process of attachment. *AMTN* expression is visible in the inner dental epithelium cells facing the tooth matrix along the tooth base. am: ameloblasts; de: dentin; es: demineralized enamel space; od: odontoblasts; ode: outer dental epithelium. Scale bars: **A-D** = 25 μ m; **E-K** = 50 μ m.

basal actinopterygian lineages, e.g. polypterids and lepisosteids, and of chondrichthyans to better understand the evolutionary history of these EMPs in gnathostomes.

The comparison of *AMTN* structure in sarcopterygian lineages suggests that the ancestral sequence was composed of either nine or 10 exons, depending on whether exon 5 was present in the ancestor and then lost in the coelacanth lineage (or not found in gDNA) or acquired in the lineage leading to tetrapods (Figure 7). To date

AMTN transcripts, from which the *AMTN* structure could be accurately defined, are available neither in the coelacanth (only genomic sequence), nor in Dipnoi (lungfishes), nor in representatives of the basal actinopterygian lineages (polypterids, lepisosteids, acipenserids and amiids). Furthermore, when only gDNA is available coding exons could be missed, as illustrated by the discovery of the putative exon 2c in monotreme and marsupial *AMTN*, after this exon was identified in



sauropsids. Indeed, this exon was not detected in opossum *AMTN* when using comparison with mammalian sequences that do not possess exon 2c [17] but was later found by Kawasaki and Amemiya [12] when using comparison to sauropsid sequences that include this exon.

Our results suggest that some coding exons present in the coelacanth *AMTN* and in most of the tetrapods analyzed here derive from those of an ancestral SCPP, from which *AMTN* and EMPs originated after duplication. Indeed, *AMTN* exons 2a and 2b are homologous to exons 2 and 3 (exon 4 and 5 in *ENAM*) of all SCPPs, respectively. In addition, *AMTN* shares several other characteristics with all EMPs, *i.e.* the signal peptide encoded by exon 2a, the conserved Ser-X-Glu motif (putative phosphorylation site) encoded by exon 2b, and the presence of a variable region encoded by a large exon, as previously observed by Kawasaki and Weiss [6].

The presence of *AMTN* exon 2b in salamander cDNA and its absence in clawed frog, for which gDNA and cDNA sequences are available, indicates that this exon has been lost either early in the anuran lineage (no *AMTN* sequences available in other frog lineages), or later in the lineage leading to Pipidae (Figure 7). Exon 2b also lacks in mammalian *AMTN*, a finding indicating that this exon was lost in an ancestral mammal, after

mammalian and sauropsid lineages diverged. This would indicate that the phosphorylation site (SxE motif) encoded by exon 2b, the presence of which characterizes most SCPPs, is not required for the correct *AMTN* function during amelogenesis in clawed frog and mammals. This leads to the question of whether or not the phosphorylation site (SxxE motif) encoded by exon 7 compensates, in mammals, for the lack of that encoded by exon 2b.

Exon 2c was found in non-mammalian sarcopterygian *AMTN* and in non-placental mammals. The presence of this exon in representative species of the four sarcopterygian lineages (Actinistia, Amphibia, Sauropsida and Mammalia) indicates that its origin is to be found before the divergence of these lineages. On the other hand, its absence in placental mammals, suggests that exon 2c was probably lost in the common ancestor of placentals.

Exon 3b was found in squamate *AMTN* only, a finding which suggests that this exon was acquired either in the lepidosaurian lineage after its divergence from other sauropsid lineages or soon after Squamata diverged from the sphenodontian lineage (Figure 7).

Exon 4 is absent in the clawed frog *AMTN* sequence (gDNA and cDNA available), a finding which indicates that, as proposed for exon 2b this exon was lost either

early in the anuran lineage or later, in the lineage leading to Pipidae. We did not find this exon in platypus *AMTN*, indicating that exon 4 was secondarily lost in this lineage. However, in absence of *AMTN* cDNA in this lineage, the lack of exon 4 could also result from a genome assembly artefact.

Exon 5 has not been found in coelacanth, clawed frog and platypus genomes, and is not present in clawed frog cDNA either. As discussed above we cannot know whether this exon was present in the sarcopterygian ancestor or was recruited later in a tetrapod ancestor. Parsimonious analysis suggests that exon 5 was secondarily lost in clawed frog (not found in clawed frog cDNA and gDNA sequence, but present in salamander *AMTN* cDNA) and in platypus, although the lack in the latter could result from a badly assembled genomic sequence.

Exon 7 encodes an SxxE motif (putative phosphorylation site) that is found in all *AMTN* sequences analyzed so far. When phosphorylated, this motif promotes hydroxyapatite precipitation *in vitro* [27]. Such motif is also found in two other EMPs, *AMBN* (encoded by exon 12) and *ENAM* (exon 9) [12]. These findings suggest that (i) the ancestral sarcopterygian *AMTN* exon 7 possessed this SxxE motif, (ii) the motif is functional (conserved during more than 430 Ma), and (iii) *AMTN* exon 7 is homologous to *AMBN* exon 12 and to *ENAM* exon 8, all of them preceding the large exons 8, 13 and 10, respectively. In clawed frog *AMTN*, the exon 7 not only encodes a SxxE/D motif, but also codes for a second phosphorylation site. Because the SxE motif encoded by exon 2b was lost in the pipid (or anuran) lineage, we suggest that the second SxE motif, encoded by exon 7, could compensate for the loss of the former. The presence of two phosphorylation sites, that could be located in different regions of the protein, was probably essential for *AMTN* to fulfill its function in non-mammalian sarcopterygians.

Exon 8 experienced two different evolutionary histories in sarcopterygians. In non-mammals, exon 8 is large and encodes a variable region of the protein, the C-terminal region of which includes a well-conserved Arg-Gly-Asp (RGD) integrin-binding motif that likely plays a crucial role for the protein function. RGD motifs are recognized by integrins and mediate the attachment of the cell to the extracellular matrix [48]. As for the last exon of all EMPs and of many SCPPs, exon 8 encodes also the termination codon and contains the 3'UTR. In contrast, in all placentalia lineages, *AMTN* exon 8 is shorter than in the other lineages and has lost a large part of the 3' region, including the region encoding the RGD motif in non-mammals [12], and hence the loss of the adhesive function provided by this motif [48]. In addition, placentalia *AMTN* possesses an exon 9, which encodes the three last amino acids of the protein followed by the stop codon and the 3'UTR.

Sequence comparison showed that a mutation in exon 8 generated an intraexonic splice site in an ancestral placentalia *AMTN*. This intraexonic splicing occurred within a codon, leading to the recruitment of exon 9 encoding an appropriate stop codon. It appears that encoding the stop codon could be the only role of exon 9 as several mammalian species lack this last exon because a mutation generated a stop codon at the extremity of exon 8 [17].

In monotremes and marsupials, the question of the efficient presence of the intraexonic splicing is posed. Indeed, the unavailability of cDNA data in both lineages has led to various interpretations. The first possibility we already proposed [17] is that intraexonic splicing occurred early in mammalian evolution, prior to current mammalian lineages differentiated. This finding is supported by (i) platypus and opossum *AMTNs* displaying a similar environment favorable for intraexonic splicing as observed in the homologous region of placental mammals, and (ii) exon 9 sequence, similar to that in placental mammals, present in both gDNA. The second possibility, suggested by Kawasaki and Amemiya [12], is that the intraexonic splicing in *AMTN* exon 8 did not occur in an ancestral marsupial but took place later in an ancestral placental. This finding is supported by the conservation of an RGD motif in the extremity of opossum *AMTN*, as in non-mammalian species. Such a long lasting conservation of RGD motif, although the rest of the sequence is less conserved, could indicate that this region is functional. A third interpretation could be that both *AMTN* variants are present in marsupials, the one with a short exon 8 and exon 9 (no RGD encoded), the other with the large exon 8 only (encoding an RGD). In platypus, the interpretation could be the same. However, if the intraexonic splicing does not occur and a large exon 8 transcribed, the latter does not encode an RGD. This suggests a different evolution of *AMTN* in this lineage. We previously showed in mammals that *AMTN* is enamel specific [17]. In platypus, enamel is no longer present in adults, meaning that the functional pressure on enamel proteins is relaxed [49]. This could have led to some changes in *AMTN* sequence, including mutations in the sequence encoding the RGD motif.

A RGD motif is present in all members of the acidic SCPPs (dentin and bone SCPPs) and is also found in the *ENAM* sequence of several mammalian species [50]. This suggests that the RGD motif of *AMTN* was probably inherited from an ancestral SCPP. Human and mouse recombinant *AMTN* do not mediate attachment of any cell types [21], consistent with the absence of RGD motif in mammalian *AMTN*.

Taken together our results suggest that in non-mammalian sarcopterygians *AMTN* may play an important role in ameloblast adhesion to the enamel matrix. This role in ameloblast adhesion was then probably lost, either

in the last common mammalian ancestor or later in the last common ancestor of placentals, as a consequence of a mutation generating an intraexonic splice site in exon 8, suppressing the encoded RGD motif. Could the absence of this RGD motif explain the late expression of *AMTN*, *i.e.* from the maturation phase onwards, previously reported during murine amelogenesis [1,3,24]? The comparative study of *AMTN* expression in two selected tetrapods has answered partially this question.

Drastic changes of Amelotin expression during amelogenesis occurred in early mammals

In lizard and salamander, tooth formation is roughly similar to that described in other vertebrates, but unlike mammals, ameloblasts do not exhibit Tomes' processes, rod and interrod enamel structures are absent, and hence enamel is not prismatic [51-53]. Therefore important changes (Tomes' processes, prismatic enamel) appeared in the mammalian lineage after it diverged from sauropsids, and before the divergence of marsupials, because the main ameloblast features and enamel structure are observed in current marsupial representatives, *e.g.* opossum [54]. These changes could be related to variation in spatial-temporal expression of the ameloblast-secreted proteins/genes during enamel matrix formation in mammals compared to non-mammalian tetrapods. In previous studies, we have shown that *AMEL* expression during amelogenesis was similar in all tetrapods [52,55]. No data are currently available in the literature for the expression of other ameloblast-secreted genes such as *AMBN*, *ENAM*, or *MMP20* in non-mammalian tetrapods.

Differences in the spatial-temporal expression of *AMTN* appear when comparing lizard or salamander amelogenesis to the one of rodents. In the incisors and molars of the latter, *AMTN* is predominantly expressed in maturation-stage ameloblasts [1]. In lizard, *AMTN* expression is detected in ameloblasts as soon as enamel matrix deposition has started, and is maintained from secretion to late maturation stage. *AMTN* is no longer expressed in the reduced ameloblasts after tooth eruption. In salamander larvae, *AMTN* expression is detected in early stages of amelogenesis while in adults, the onset of expression is delayed and appears slightly later than in the lizard, during enamel matrix deposition. Then, in both larvae and adult salamanders, *AMTN* expression is maintained in ameloblast until maturation stage. The disappearance of *AMTN* signal in ameloblasts occurs earlier than in lizard but it persists longer in the inner dental epithelium along the dentin cone. This late *AMTN* expression in the cells facing the region lacking enamel along the tooth base could be related to the formation of the amphibian pedicel [56,57]. Future studies should investigate this further. In erupted teeth of rats, a late expression of

AMTN was detected in the internal basal lamina of the junctional epithelium [3,24], although no mRNA expression has been detected in the junctional epithelium of post-eruptive mouse molars [1,58]. In rodents, neither expression of the *AMTN* gene nor the protein was ever detected beyond the cemento-enamel junction in the epithelial cells along the tooth root. Nevertheless, *AMTN* was found in Hertwig's epithelial root sheath cells entrapped in cementum [59]. In lizard and salamander, *AMTN* expression is detected earlier in secretory stage ameloblasts, and later in the cells of the inner dental epithelium along the tooth root. Immunolocalization of the protein should be performed to better understand the significance of the mRNA expression pattern.

AMTN being expressed during the various steps of amelogenesis in lizard and salamander, we concluded that (i) *AMTN* must be considered an enamel matrix protein (EMP), as are *AMBN*, *ENAM* and *AMEL*, and (ii) this status was the ancestral condition in non-mammalian tetrapods. When comparing lizard and salamander to mammals, one could hypothesize that the differences observed both in the timing of *AMTN* expression and in the gene structure could be responsible for the differences in enamel microstructure (non-prismatic versus prismatic, respectively) in these lineages. The absence of both Tomes's process and of an organized rod/interrod enamel structure in lizard and salamander, on the one hand, and in mice overexpressing *AMTN* under *AMEL* promoter, on the other hand, support this hypothesis [26].

An evolutionary scenario for Amelotin

The putative evolutionary scenario we propose to explain how the spatiotemporal *AMTN* expression and the gene structure changed in mammals could be visualized as the succession of several events that occurred early in mammalian evolution. One event probably occurred at the promoter level (mutation of the promoter, change in transcription factor, etc.) resulting in late *AMTN* expression during enamel mineralization. Two other, probably independent events resulted in the loss of exon 2b encoding the SxE motif and in the intraexonic splicing of exon 8 eliminating the RGD motif. The occurrence of these events (in any order) may have led to important changes in ameloblast structure (differentiation of Tomes' processes) and in enamel organization (formation of prisms).

Amelotin was tooth specific in early amniotes

In birds, pseudogenization of EMP genes is related to tooth loss [15,31,60]. In *A. platyrhynchos*, we found that *AMTN* is also a pseudogene. As observed for EMP genes, *AMTN* underwent pseudogenization after the capability to develop teeth was lost in the common

ancestor of modern birds, 80–100 Mya [49,61]. Numerous mutations were accumulated (substitutions and indels), producing a ϕ *AMTN* sequence that is now hardly recognizable from the non-coding gDNA. In turtles, the capability to build teeth was lost in the last common ancestor of chelonians, 250 Mya [49]. In *C. mydas*, *AMTN* also underwent pseudogenization, producing a ϕ *AMTN*, in which a few exons could be identified. These findings indicate that in the ancestors of these two sauropsid species *AMTN* had no other functions than being involved in amelogenesis and is, therefore, an enamel specific protein in toothed sauropsids. In addition, it appears that, after the loss of function, mutations in this gene accumulated more rapidly in birds than in turtles although teeth were lost three folds earlier in turtle than in the bird ancestor [49]. This could be related to a slower evolution of chelonians during a long geological period (long generation time) compared to rapid evolution of neornithes (short generation time) [60,62].

In a previous study, we showed similar *AMTN* pseudogenization in two xenarthran mammals, armadillo and sloth, in which teeth are devoid of enamel cover [17]. These results therefore suggest that *AMTN* was tooth/enamel specific in the last common amniote ancestor, similarly to what was observed for other EMPs.

Conclusions

This is the first comparative study of *AMTN* sequence in representatives of various mammalian and non-mammalian vertebrates. *AMTN* was present in the last common sarcopterygian ancestor more than 420 Mya. Various loss or gain of coding exons were identified in coelacanth, amphibians, reptiles and non-placental mammals, indicating different evolutionary pathways in sarcopterygian lineages. *In situ* hybridization of *AMTN* during tooth formation in lizard and salamander revealed that *AMTN* is expressed in ameloblasts during all stages of amelogenesis (with some differences in both species). These findings suggest that *AMTN* is an essential EMP for amelogenesis in these two species. The differences in spatiotemporal expression of *AMTN* described in murine vs lizard and salamander teeth would then suggest that in sauropsids and amphibians *AMTN* could have different functions than in mammals.

Additional files

Additional file 1: Scientific and common names of the species used in our study, and sources of Amelotin sequences. Last access to databases was on February 2014. The sequences obtained from sequenced genomes (names in bold) are available at [32].

Additional file 2: Amelotin sequences. In bold: from cDNA sequences. ?: unknown residues. *: Stop codon.

Additional file 3: Forward (F) and reverse (R) primers used to amplify Amelotin cDNA of various species and to build *AMTN* probes. Target regions and annealing temperatures are indicated.

Abbreviations

Aa: Amino acids; AMBN: Ameloblastin; AMEL: Amelogenin; AMTN: Amelotin; BLAST: Basic local alignment search tool; bp: base pair; CK2: Casein kinase 2; EMPs: Enamel matrix protein; ENAM: Enamelin; Ma: Million years; MABT: Maleic acid buffer tween; MBB: Montpellier bioinformatics biodiversity; Mya: Million years ago; NBT/BCIP: Nitro blue tetrazolium chloride/5-bromo-4-chloro-3-indolyl phosphate; Nt: Nucleotides; NTM: NaCl, TrisHCl, MgCl₂; ODAM: Odontogenic ameloblast-associated; RGD: Arg-gly-asp; SSCP: Secretory calcium-binding phosphoprotein; UTRs: Untranslated regions; WGS: Whole genome shotgun.

Competing interests

The authors declare that they have no competing interests.

Authors' contributions

BG and JYS conceived and designed the experiments. BG carried out the molecular genetic experiments. YC and JS performed jaw RNA extractions for the transcriptomic study. TDB participated in the salamander study. JYS performed in silico data recovery and sequence alignment. BG and JYS wrote the manuscript. All authors read and approved the final manuscript.

Acknowledgements

We are grateful to Samuel Martin, Director of "La ferme des crocodiles", Pierrelatte, France, for giving us a young *Caiman crocodilus*; to K. Daouès, director of "La ferme tropicale", Paris, France, for giving us a juvenile *Python regius*, a juvenile *Tachydromus sexlineatus*, and several *Anolis carolinensis*. This study was financially supported by grants from CNRS, Université Pierre & Marie Curie, and from the ANR-12-BSV7-020, project "Jaws". We thank Marie-Claire Lajarille for histological preparations.

Author details

¹Institut de Biologie Paris-Seine, Université Pierre et Marie Curie, Evolution Paris-Seine, Paris UMR7138, France. ²Department of Biology, University of South Alabama, Mobile, AL 36688, USA. ³Department of Structural Biology, Weizmann Institute of Science, Rehovot 76100, Israel.

Received: 17 October 2014 Accepted: 24 February 2015

Published online: 14 March 2015

References

- Iwasaki K, Bajenova E, Somogyi-Ganss E, Miller M, Nguyen V, Nourkeyhani H, et al. Amelotin—a novel secreted, ameloblast-specific protein. *J Dent Res*. 2005;84:1127–32.
- Moffatt P, Smith CE, Sooknunan R, St-Arnaud R, Nanci A. Identification of secreted and membrane proteins in the rat incisor enamel organ using a signal-trap screening approach. *Eur J Oral Sci*. 2006;114:139–46.
- Moffatt P, Smith CE, St-Arnaud R, Simmons D, Wright JT, Nanci A. Cloning of rat amelotin and localization of the protein to the basal lamina of maturation stage ameloblasts and junctional epithelium. *Biochem J*. 2006;399:37–46.
- Moffatt P, Smith CE, St-Arnaud R, Nanci A. Characterization of Apin, a secreted protein highly expressed in tooth-associated epithelia. *J Cell Biochem*. 2008;103:941–56.
- Moffatt P, Wazen RM, Neves JDS, Nanci A. Characterisation of secretory calcium-binding phosphoprotein-proline-glutamine-rich 1: a novel basal lamina component expressed at cell-tooth interfaces. *Cell Tissue Res*. 2014;358:843–55.
- Kawasaki K, Weiss KM. Mineralized tissue and vertebrate evolution: the secretory calcium-binding phosphoprotein gene cluster. *Proc Natl Acad Sci U S A*. 2003;100:4060–5.
- Kawasaki K, Weiss KM. Evolutionary genetics of vertebrate tissue mineralization: the origin and evolution of the secretory calcium-binding phosphoprotein family. *J Exp Zool B Mol Dev Evol*. 2006;306B:295–316.
- Kawasaki K, Suzuki T, Weiss KM. Genetic basis for the evolution of vertebrate mineralized tissue. *Proc Natl Acad Sci U S A*. 2004;101:11356–61.
- Bertrand S, Fuentealba J, Aze A, Hudson C, Yasuo H, Torrejon M, et al. A dynamic history of gene duplications and losses characterizes the evolution of the SPARC family in eumetazoans. *Proc R Soc Lond B Biol Sci*. 2013;280:20122963.
- Dehal P, Boore JL. Two rounds of whole genome duplication in the ancestral vertebrate. *PLoS Biol*. 2005;3:e314.

11. Kawasaki K, Buchanan AV, Weiss KM. Gene duplication and the evolution of vertebrate skeletal mineralization. *Cells Tissues Organs*. 2007;186:7–24.
12. Kawasaki K, Amemiya CT. SSCP genes in the coelacanth: tissue mineralization genes shared by sarcopterygians. *J Exp Zool B Mol Dev Evol*. 2014;322:390–402.
13. Hedges SB. Vertebrates (Vertebrata). In: Hedges SB and Kumar S, editors. *Timetree of Life*. New York: Oxford University Press; 2009. p. 309–314.
14. Kawasaki K. The SSCP gene family and the complexity of hard tissues in vertebrates. *Cells Tissues Organs*. 2011;194:108–12.
15. Al-Hashimi N, Lafont A-G, Delgado S, Kawasaki K, Sire J-Y. The enamel genes in lizard, crocodile, and frog and the pseudogene in the chicken provide New insights on enamel evolution in tetrapods. *Mol Biol Evol*. 2010;27:2078–94.
16. Huq NL, Cross KJ, Ung M, Reynolds EC. A review of protein structure and gene organisation for proteins associated with mineralised tissue and calcium phosphate stabilisation encoded on human chromosome 4. *Arch Oral Biol*. 2005;50:599–609.
17. Gasse B, Silvent J, Sire J-Y. Evolutionary analysis suggests that AMTN is enamel-specific and a candidate for AI. *J Dent Res*. 2012;91:1085–9.
18. Sire J-Y, Davit-Béal T, Delgado S, Gu X. The origin and evolution of enamel mineralization genes. *Cells Tissues Organs*. 2007;186:25–48.
19. Toyosawa S, O'hUigin C, Figueroa F, Tichy H, Klein J. Identification and characterization of amelogenin genes in monotremes, reptiles, and amphibians. *Proc Natl Acad Sci U S A*. 1998;95:13056–61.
20. Shintani S, Kobata M, Toyosawa S, Ooshima T. Identification and characterization of ameloblastin gene in an amphibian, *Xenopus laevis*. *Gene*. 2003;318:125–36.
21. Somogyi-Ganss E, Nakayama Y, Iwasaki K, Nakano Y, Stolf D, McKee MD, et al. Comparative Temporospatial expression profiling of murine amelotin protein during amelogenesis. *Cells Tissues Organs*. 2012;195:535–49.
22. Dos Santos NJ, Wazen RM, Kuroda S, Francis Zalzal S, Moffatt P, Nanci A. Odontogenic ameloblast-associated and amelotin are novel basal lamina components. *Histochem Cell Biol*. 2012;137:329–38.
23. Holcroft J, Ganss B. Identification of Amelotin- and ODAM-interacting enamel matrix proteins using the yeast two-hybrid system. *Eur J Oral Sci*. 2011;119 Suppl 1:301–6.
24. Nishio C, Wazen R, Kuroda S, Moffatt P, Nanci A. Expression pattern of odontogenic ameloblast-associated and amelotin during formation and regeneration of the junctional epithelium. *Eur Cell Mater*. 2010;20:393–402.
25. Gao Y, Wang W, Sun Y, Zhang J, Li D, Wei Y, Han T. Distribution of amelotin in mouse tooth development. *Anat Rec*. 2010;293:135–40.
26. Lacruz RS, Nakayama Y, Holcroft J, Nguyen V, Somogyi-Ganss E, Snead ML, et al. Targeted overexpression of amelotin disrupts the microstructure of dental enamel. *PLoS One*. 2012;7:e35200.
27. Abbarin N, Miguel SS, Holcroft J, Iwasaki K, Ganss B. The enamel protein amelotin is a promoter of hydroxyapatite mineralization. *J Bone Miner Res*. 2014; doi:10.1002/jbmr.2411.
28. Ensembl [<http://www.ensembl.org/index.html>]
29. NCBI [<http://www.ncbi.nlm.nih.gov>]
30. UniDPlot [<http://www.ese.u-psud.fr/epc/conservation/UniDPlot/>]
31. Sire J-Y, Delgado SC, Girondot M. Hen's teeth with enamel cap: from dream to impossibility. *BMC Evol Biol*. 2008;8:246.
32. Jean-Yves SIRE personal website. [<http://jysire.free.fr/>]
33. Primer3 v.0.4.0 [<http://frodo.wi.mit.edu/primer3/>]
34. Rozen S, Skaletsky H. Primer3 on the WWW for general users and for biologist programmers. *Methods Mol Biol*. 2000;132:365–86.
35. Gayral P, Weinert L, Chiari Y, Tsagkogeorga G, Ballenghien M, Galtier N. Next-generation sequencing of transcriptomes: a guide to RNA isolation in nonmodel animals. *Mol Ecol Resour*. 2011;11:650–61.
36. MBB platform [<http://mbb.univ-montp2.fr/MBB//index.php>]
37. Se-AL v2.0a11 [<http://tree.bio.ed.ac.uk/software/seal/>]
38. SignalP 4.1 [<http://www.cbs.dtu.dk/services/SignalP>]
39. Petersen TN, Brunak S, von Heijne G, Nielsen H. SignalP 4.0: discriminating signal peptides from transmembrane regions. *Nat Methods*. 2011;8:785–6.
40. Prosite [<http://prosite.expasy.org/>]
41. Sigrist CJA, De Castro E, Cerutti L, Cuče BA, Hulo N, Bridge A, et al. New and continuing developments at PROSITE. *Nucleic Acids Res*. 2013;41:D344–7.
42. Gallien L, Durocher M. Table chronologique du développement chez *Pleurodeles waltlii* Michax. *Bull Biol Fr Belg*. 1957;91:97–114.
43. Wang X, Wang S, Lu Y, Gibson MP, Liu Y, Yuan B, et al. FAM20C plays an essential role in the formation of murine teeth. *J Biol Chem*. 2012;287:35934–42.
44. TimeTree [<http://www.timetree.net/>]
45. Madsen O. Mammals (Mammalia). In: Hedges SB, Kumar S, editors. *The timetree of life*. New York: Oxford University Press; 2009. p. 459–61.
46. Cannatella DC, Vieitesb DR, Zhangb P, Wakeb MH, Wakeb DB. Amphibians (Lissamphibia). In: Hedges SB, Kumar S, editors. *The timetree of life*. New York: Oxford University Press; 2009. p. 353–6.
47. Shedlock AM, Edwards SV. Amniotes (amniota). In: Hedges SB, Kumar S, editors. *The timetree of life*. New York: Oxford University Press; 2009. p. 375–9.
48. Ruoslahti E. Rgd and other recognition sequences for integrins. *Annu Rev Cell Dev Biol*. 1996;12:697–715.
49. Davit-Béal T, Tucker AS, Sire J-Y. Loss of teeth and enamel in tetrapods: fossil record, genetic data and morphological adaptations. *J Anat*. 2009;214:477–501.
50. Al-Hashimi N, Sire J-Y, Delgado S. Evolutionary analysis of mammalian enamel, the largest enamel protein, supports a crucial role for the 32-kDa peptide and reveals selective adaptation in rodents and primates. *J Mol Evol*. 2009;69:635–56.
51. Delgado S, Davit-Béal T, Allizard F, Sire J-Y. Tooth development in a scincid lizard, *Chalcides viridanus* (Squamata), with particular attention to enamel formation. *Cell Tissue Res*. 2005;319:71–89.
52. Delgado S, Couble M-L, Magloire H, Sire J-Y. Cloning, sequencing, and expression of the amelogenin gene in Two scincid lizards. *J Dent Res*. 2006;85:138–43.
53. Davit-Béal T, Allizard F, Sire J-Y. Enameloid/enamel transition through successive tooth replacements in *Pleurodeles waltli* (Lissamphibia, Caudata). *Cell Tissue Res*. 2007;328:167–83.
54. Sasagawa I, Ferguson MW. The development of enamel tubules during the formation of enamel in the marsupial *Monodelphis domestica*. *J Anat*. 1991;179:47–58.
55. Assaraf-Weill N, Gasse B, Al-Hashimi N, Delgado S, Sire J-Y, Davit-Béal T. Conservation of amelogenin gene expression during tetrapod evolution. *J Exp Zool B Mol Dev Evol*. 2013;320:200–9.
56. Davit-Béal T, Allizard F, Sire J-Y. Morphological variations in a tooth family through ontogeny in *Pleurodeles waltli* (Lissamphibia, Caudata). *J Morphol*. 2006;267:1048–65.
57. Davit-Béal T, Chisaka H, Delgado S, Sire J-Y. Amphibian teeth: current knowledge, unanswered questions, and some directions for future research. *Biol Rev*. 2007;82:49–81.
58. Sawada T, Yamazaki T, Shibayama K, Kumazawa K, Yamaguchi Y, Ohshima M. Expression and localization of laminin 5, laminin 10, type IV collagen, and amelotin in adult murine gingiva. *J Mol Histol*. 2014;45:293–302.
59. Nishio C, Wazen R, Kuroda S, Moffatt P, Nanci A. Disruption of periodontal integrity induces expression of apin by epithelial cell rests of Malassez. *J Periodontol Res*. 2010;45:709–13.
60. Meredith RW, Gatesy J, Springer MS. Molecular decay of enamel matrix protein genes in turtles and other edentulous amniotes. *BMC Evol Biol*. 2013;13:20.
61. Louchart A, Viriot L. From snout to beak: the loss of teeth in birds. *Trends Ecol Evol*. 2011;26:663–73.
62. Chiari Y, Cahais V, Galtier N, Delsuc F. Phylogenomic analyses support the position of turtles as the sister group of birds and crocodiles (Archosauria). *BMC Biol*. 2012;10:65.